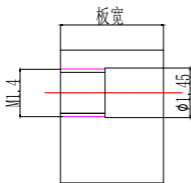
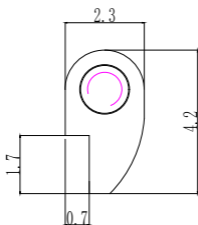


# 立式登球

## 特征用途:

- 1:用于不锈钢镜腿的常规立式、SS技术或圆形头系统的防松功能,
- 2:可用宽度:1.5 / 2.1 / 3.0/3.5/4.0
- 3:根据要求用螺丝装配



产品详细

型号: JX103

材质: 15镀锌白铜

螺丝图

